

Songs about Judges, Ruth and Samuel

Judges - *to the tune of the Alphabet song or the ABC....song*

Name the Judges who went to war
Othniel, Ehud and Shamgar
Deborah, Gideon, and Abimelech
Tola, Jair and Jephthah
Ibzan, Elon and Abdon
The last Judge was Samson

We will Listen and Obey

(to the tune of Old MacDonald had a Farm)

We will Listen and Obey,
Yes Lord, yes we will.
We will Listen and Obey,
Yes Lord, yes we will.
With a Yes Lord here and a Yes Lord there
Here a Yes, There a Yes, Everywhere a Yes! Yes!
We will Listen and Obey,
Yes Lord, yes we will.

Gideon's Song

Tune "Count Your Many Blessings"

Patsy Stevens



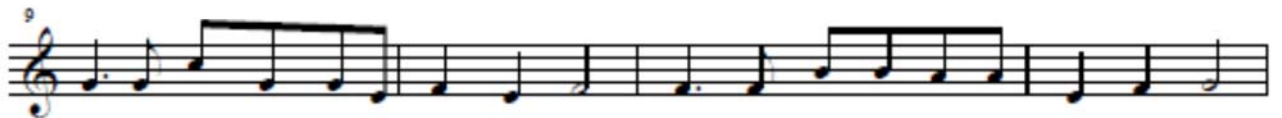
Gid - e - on you have be - come the cho - sen son, Out of all of Is - ra - el you are the one
Gid - e - on had such an ar - my of great men, But God looked at them and said, "They're too man - y".

Though your man - y trou - bles seem to get you down Al - ways trust in God and He will care for you.



To de - liv - er Is - ra - el from Mi - di - an. God will sure - ly show you how He wants it done.
Gave some tests un - til three hun - dred men were left. With that num - ber God would sure - ly get glo - ry.

Look for an - swers to your pray'rs and you will see God is real - ly watch - ing and will bless you too.



An - gel came and gave a pow'r - ful sign, Fleece was wet with dew, but ground was dry.
For the wea - pons Gid - e - on would use Pit - chers, torch - es, trum - pets God did choose.

Just as He helped Gid - e - on that night You will know that He is there for you.



Then an - other God will prove to you. Ground was wet and fleece was dry. He knows it's true.

They sur - round - ed Mid - i - an that night. And the sol - diers killed each o - ther in the fight.

Trust his wor - d He is rea - dy still. To give aid and com - fort. God is al - ways true.

To here the song below go to <http://gardenofpraise.com/bibsong1.htm>

Ruth's Song

Tune "Bring Them In"

Patsy Stevens



Lis - ten my daugh - ters, hear me now, My heart is sad, my soul is bowed.
Mo - ther, I love you, yes I do, But my - y fam - ily's here, it's true.



My hus - band's gone, I'll leave this land. I will re - turn to Beth - le - hem.
I must re - main though sad at heart. It grieves me great - ly now to part.



I will go, I will go. I will go - o wher - e - 'ere you go.



I will go, I will go. I will go with you, Na - o - mi.